

Patient derived orthotopic brain tumor models in mice - optimal for development of new therapies

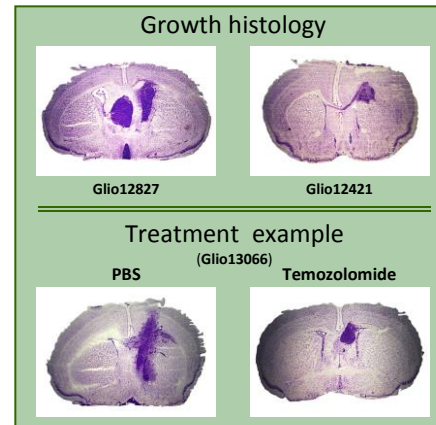
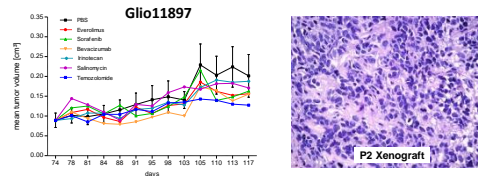
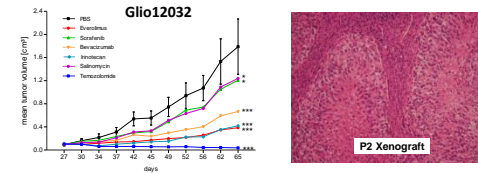
Now Available: 20 Glioma PDX-models

- Diverse mutational profile
- Various histologies and differentiation
- Distinct growth behavior
- Individual response to clinical standard drugs

Orthotopic Glioma PDX-models

Advantages:

- Tumors growing in physiological environment
- Morphology closer to patients
- Optimal tumor microenvironment
- Functional blood-brain barrier
- Invasive growth



For more information contact our expert: [Dr. Andrea Orthmann](#)

Ref: [Orthmann et al., 37th EORTC-PAMM meeting, Antwerp, 2016](#)

 find further 400 well characterized PDX models: www.epo-berlin.com

(screen online for molecular and pharmacological characteristics)

